

IDM UID
TL9EE7

VERSION CREATED ON / VERSION / STATUS
24 May 2018 / 1.7 / Approved

EXTERNAL REFERENCE / VERSION


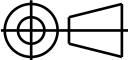
2D CAD drawing

CR_LC_TCP_HOUSING_TYPE_C_DET

CR_LC_TCP_HOUSING_TYPE_C_DET

Approval Process			
	Name	Action	Affiliation
Author	Vauquelin J.	24 May 2018:signed	IO/DG/COO/CIO/DO/CAD
Co-Authors			
Reviewers	Dube V. More V.	25 May 2018:recommended (Fast Track) 29 May 2018:recommended	IO/DG/COO/CST/TAD/ICA IO/DG/COO/CST/TAD/ICA
Previous Versions Reviews	Beaudoire S. Bhardwaj A.	27 Apr 2018:recommended v1.6 18 Apr 2018:recommended v1.6	IO/DG/COO/CIO/DO/CAD IO/DG/COO/CST/TAD/ICA
Approver	Petit P.	31 May 2018:approved	IO/DG/COO/CST/TAD/ICA
Document Security: Internal Use RO: Bhardwaj Anil			
Read Access	LG: TCPH task force team, LG: Cryostat IO team, AD: ITER, AD: External Collaborators, AD: IO_Director-General, AD: EMAB, AD: Auditors, AD: ITER Management Assessor, project administrator, RO, LG: CAD , AD: DA-IN		

<i>Change Log</i>			
CR_LC_TCP_HOUSING_TYPE_C_DET (TL9EE7)			
<i>Version</i>	<i>Latest Status</i>	<i>Issue Date</i>	<i>Description of Change</i>
v1.0	Signed	02 Nov 2016	
v1.1	Signed	24 Nov 2016	Version following Matthias comment about Sealing plane.
v1.2	Signed	20 Jan 2017	Update following INDA comments and upgrades. Update of the RH interface and of its related tolerances.
v1.3	Signed	13 Mar 2017	update following comments
v1.4	Approved	29 Mar 2017	Update of the Pump fixation holes definition following Matthias Dremel comment
v1.5	Approved	21 Jul 2017	draft version
v1.6	Revision Required	03 Apr 2018	DR-34: Removal of a Diagnostic penetration
v1.7	Approved	24 May 2018	- addition of tolerances for holes - shifting of the monitoring pipe stubs

ITER ID_TL9EE7 v1.7		2	3	4	5	6	7	8									
A																	
B																	
C																	
D																	
REV No.	DETAILS OF MODIFICATION			SHEET No.	GRID REF	DATE	DCR No.										
DRW DOC ID		Q5BJGQ		RELEASED BY		ITER Organization											
LINKED EV5 PT ID		U2L8RU		APPROVED BY		 china EU india japan korea russia USA											
PBS TITLE		Cryostat & VVPSS Cryostat Lower Cylinder		CHECKED BY					BEAUDOS								
REV DATE		15 May 18		CONTROLLED BY					VITUPIG								
SHEET SIZE		420x297		DRAWN BY					---								
THIRD ANGLE PROJECTION				NO. OF SHTS		24 CR, LC		DRAWING NUMBER		034461		SHEET		REVISION		DR STATUS	
						08						01		--E		D	
1	2	3	4	5	6	7	8										

Spacereservation for the banner

Spacereservation for the banner

A

B

C

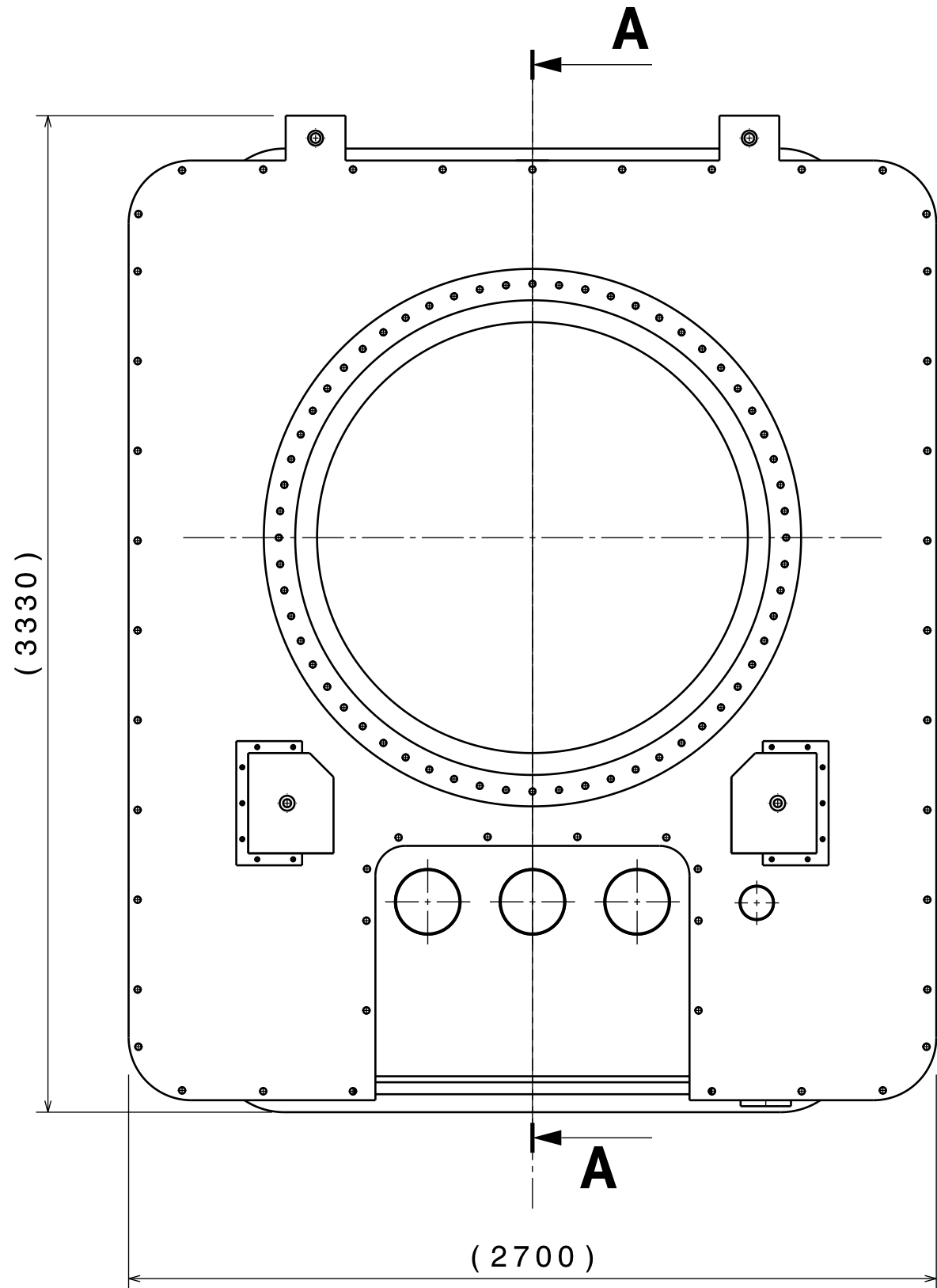
D

E

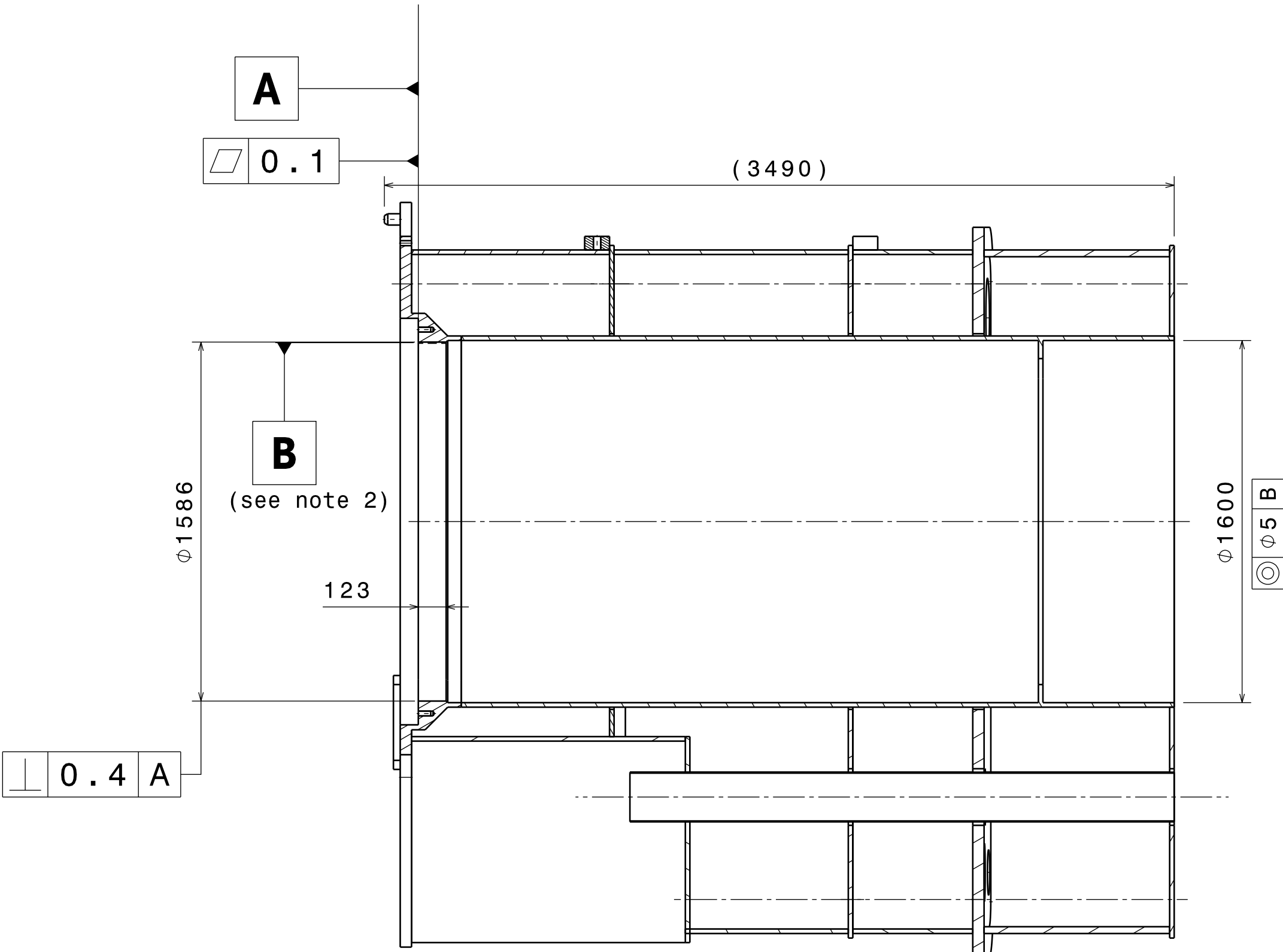
F

G

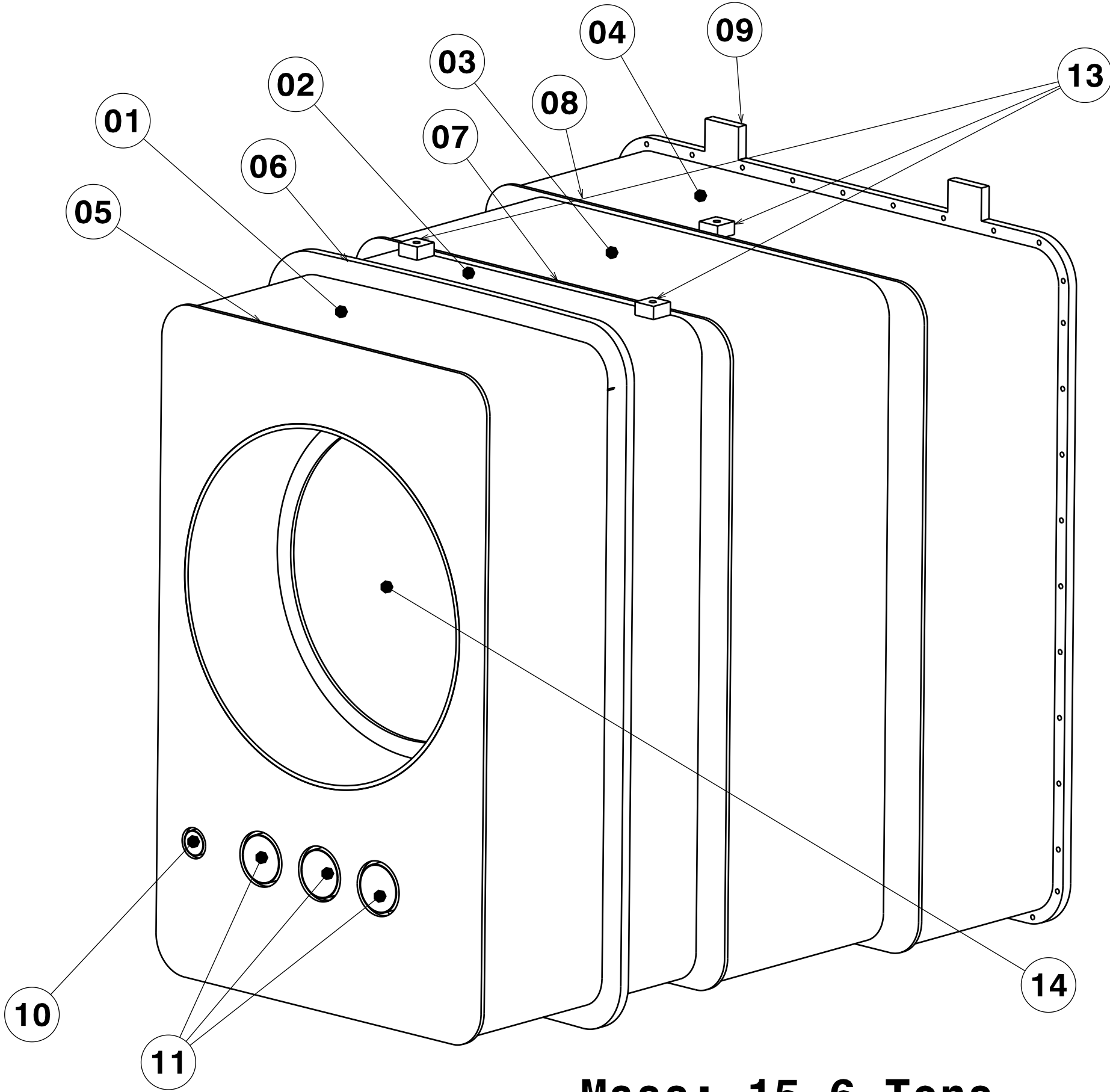
H



Front view



Section view A-A

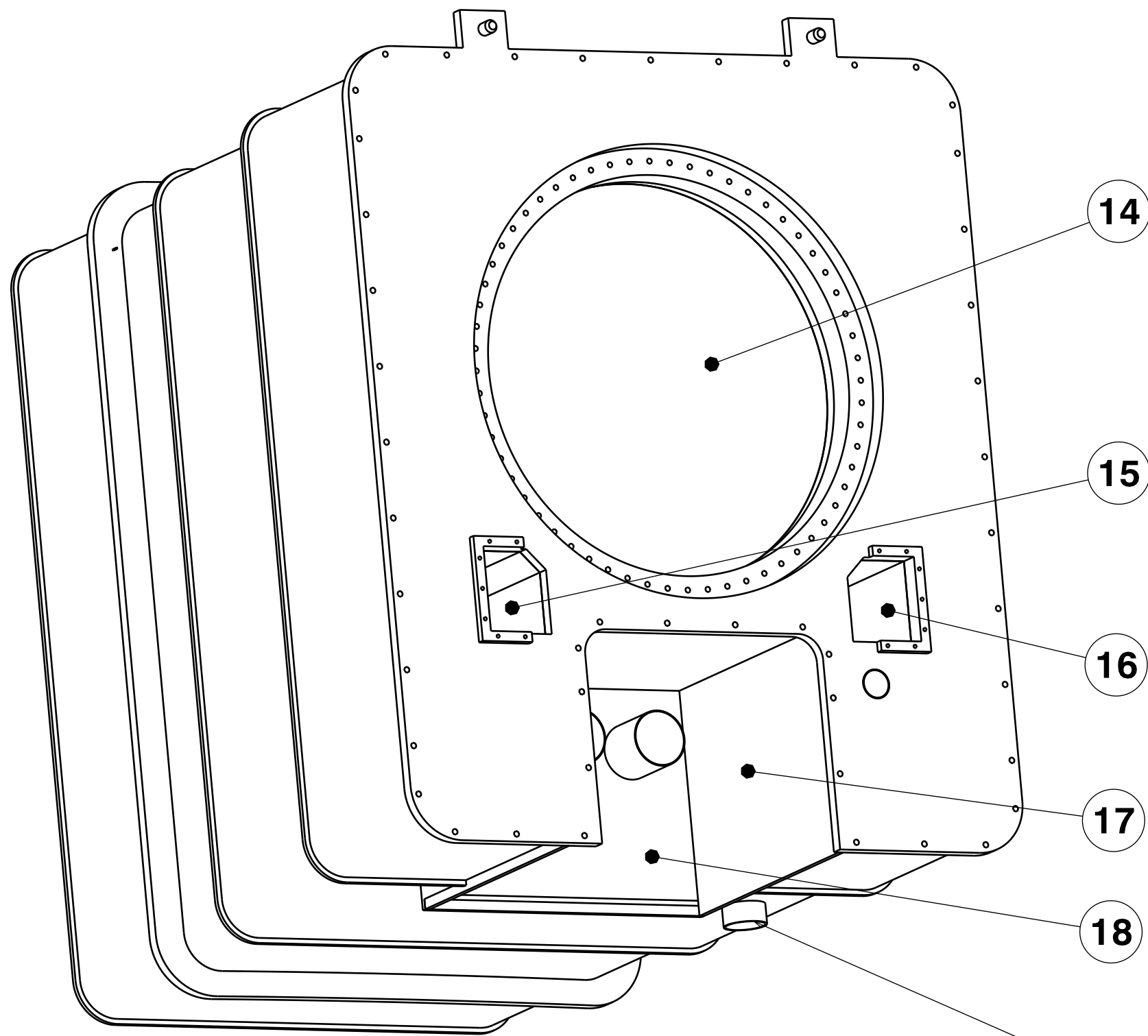


Mass: 15.6 Tons



Isometric view

Notes: 1. ISO 2768 - mK tolerances apply for this sheet unless more stringent tolerances are specified.
ISO 13920-BF to apply for welded parts.
2. The Datum B applies on machined inner surface of the Flange

Bill of material					
Part Number	Part reference	Qty	Material / Ref.	Drawing Number	Remarks
01	TCPH_SHELL_01	1	SS 304/304L	034338	
02	TCPH_SHELL_02	1	SS 304/304L	034338	
03	TCPH_SHELL_03	1	SS 304/304L	034338	
04	TCPH_SHELL_04	1	SS 304/304L	034338	
05	TCPH_VERTICAL_PLATE_04	1	SS 304/304L	034340	
06	TCPH_WALL_FLANGE_02	1	SS 304/304L	034344	
07	TCPH_VERTICAL_PLATE_05	1	SS 304/304L	034340	
08	TCPH_VERTICAL_PLATE_03	1	SS 304/304L	034340	
09	TCPH_CRYOPUMP_FLANGE_02	1	SS 304/304L	034345	
10	TCPH_PIPE_01_DN100	1	SS 304L; DN200;sch:10S; L:2385mm		
11	TCPH_PIPE_03_DN200	3	SS 304L; DN200;sch:10S; L:2385mm		
12	Deleted				
13	TCPH_LIFTING_PAD	3	SS 304/304L	034353	
14	TCPH_INNER_CYLIDER	1	SS 304/304L	034351	
15	TCPH_LEFT_RH_SOCKET	1	SS 304/304L	034343	
16	TCPH_RIGHT_RH_SOCKET	1	SS 304/304L	034343	
17	TCPH_BOTTOM_SOCKET	1	SS 304/304L	034349	
18	TCPH_BOTTOM_SOCKET_DEEP_02	1	SS 304/304L	034349	
19	TCPH_VACUUM_PIPE_DN150	1	SS 304L; DN150; sch: 40S; L:80mm		



ISOMETRIC VIEW
Scale: 1:20

DRW DOC ID			Q5BJGQ			RELEASED BY			ITER Organization			 china EU india japan korea russia USA											
LINKED EV5 PT ID			U2L8RU			APPROVED BY			PETITPA														
PBS TITLE						DRAWING TITLE						CR_LC_TCP_HOUSING_TYPE_C_DET DATUMS AND OVERALL DIMENSIONS											
Cryostat & VVPSS																							
Cryostat						CHECKED BY						BEAUDOS											
Lower Cylinder						CONTROLLED BY						VITUPIG											
REV DATE			PT MATURITY			PT VERSION			DRAWN BY			---											
15 May 18			CD			--F																	
SHEET SIZE			SCALE			PT STATUS																	
841x594			1:20			D																	
THIRD ANGLE						NO. OF			PBS 3 LEVELS			DRAWING			SHEET			REVISION			DR STATUS		
PROJECTION						SHTS			24 CR_LC			NUMBER			034461			02			--E		
						08																	

A

B

C

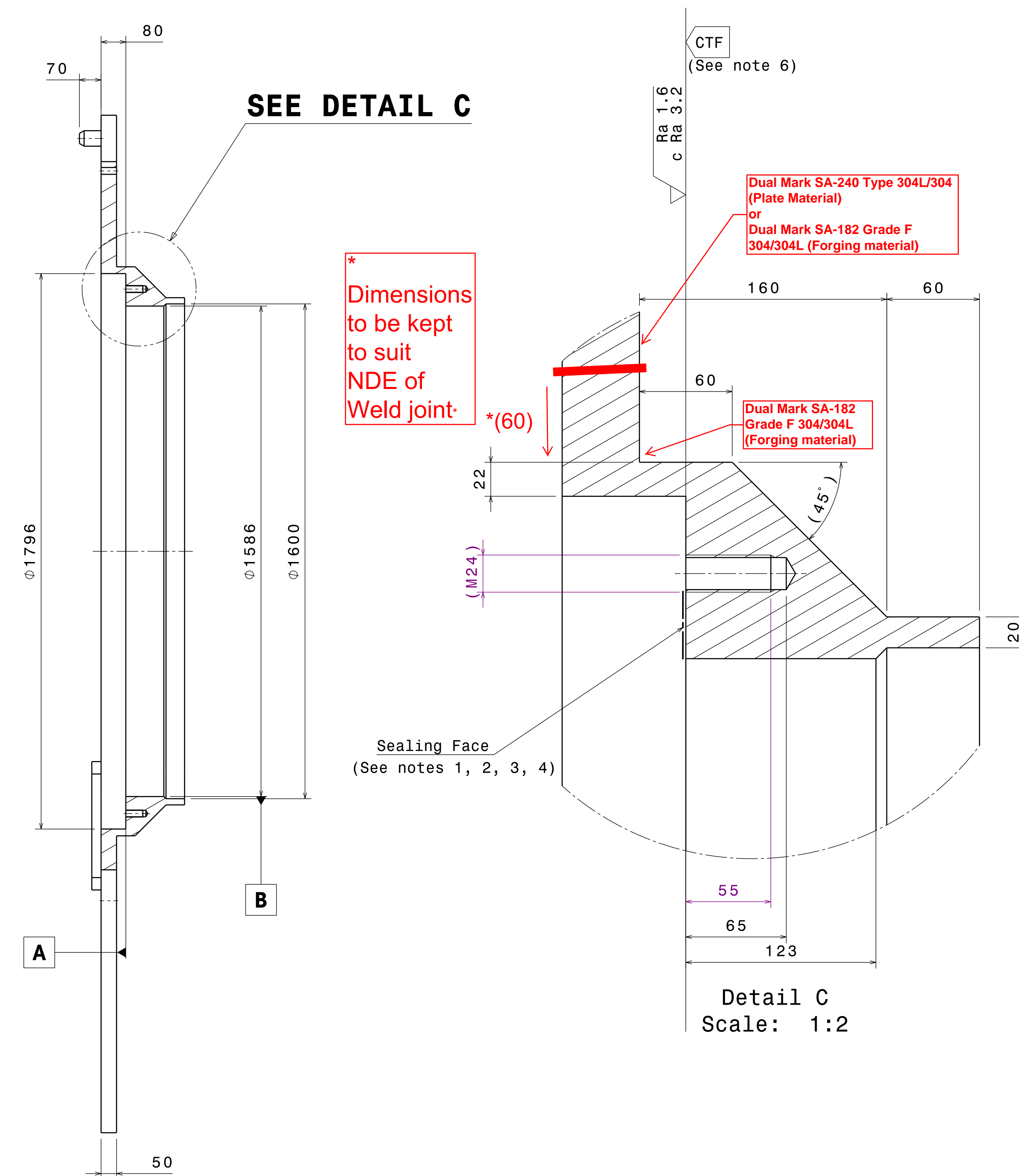
D

E


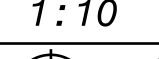
F

G

H



Detail C
Scale: 1:2

DRW DOC ID			Q5BJGQ			RELEASED BY			---			ITER Organization			 china eu india japan korea russia USA			
LINKED EV5 PT ID			U2L8RU			APPROVED BY			PETITPA			DRAWING TITLE						
PBS TITLE			Cryostat & VVPSS			CHECKED BY			BEAUDOS						CR_LC_TCP_HOUSING_TYPE_C_DET			
Cryostat						CONTROLLED BY			VITUPIG			RH FLANGE 1/2						
Lower Cylinder						DRAWN BY			---									
REV DATE		PT MATURITY		PT VERSION														
15 May 18		CD		--F														
SHEET SIZE		SCALE		PT STATUS														
841x594		1:10		D														
THIRD ANGLE				NO. OF		PBS 3 LEVELS			DRAWING		034461		SHEET		REVISION		DR STATUS	
PROJECTION				SHTS		24 CR_LC			NUMBER				03		--E		D	
				08														

A

B

C

D


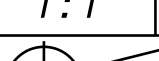
E

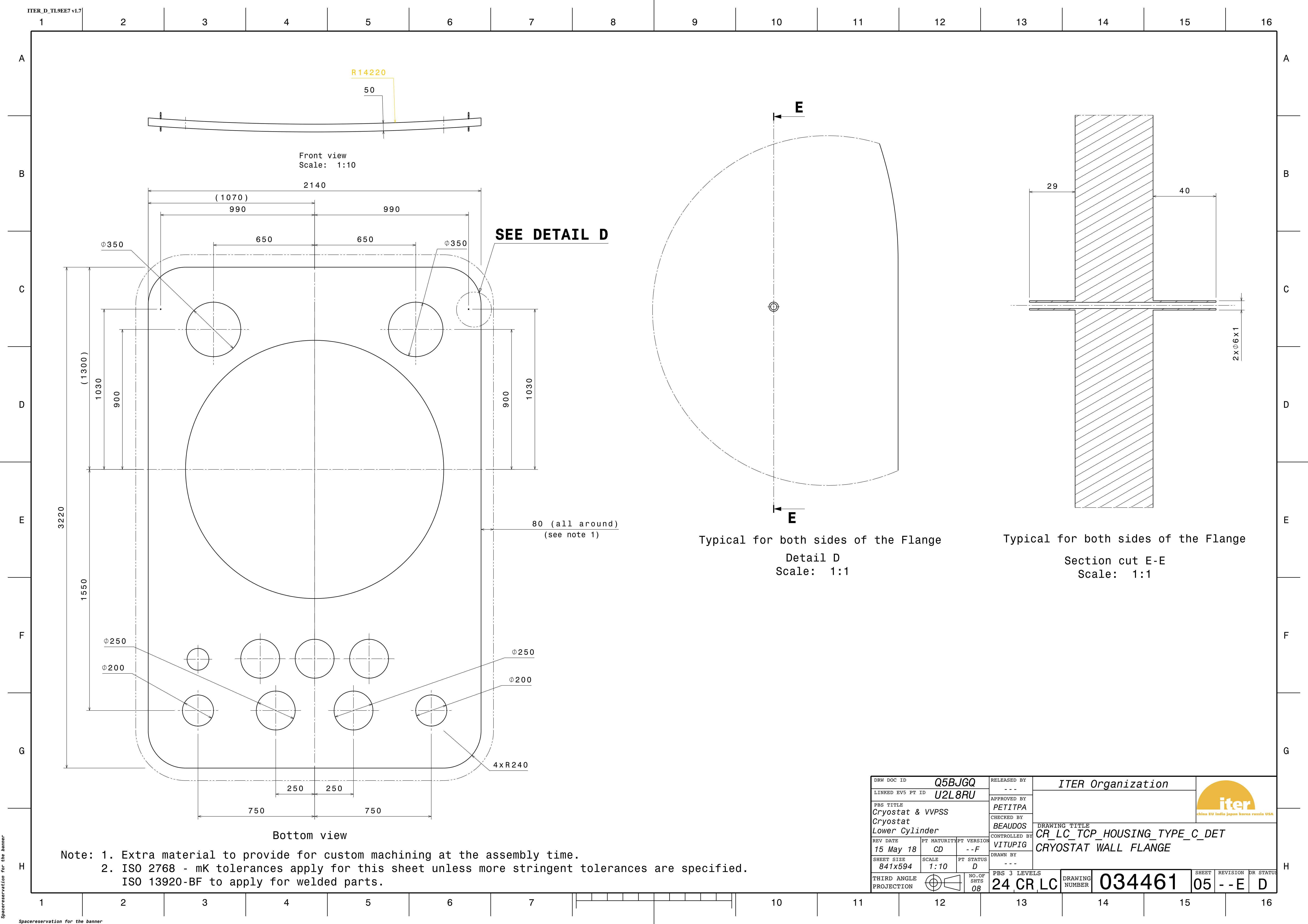
F


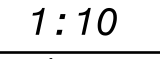
G

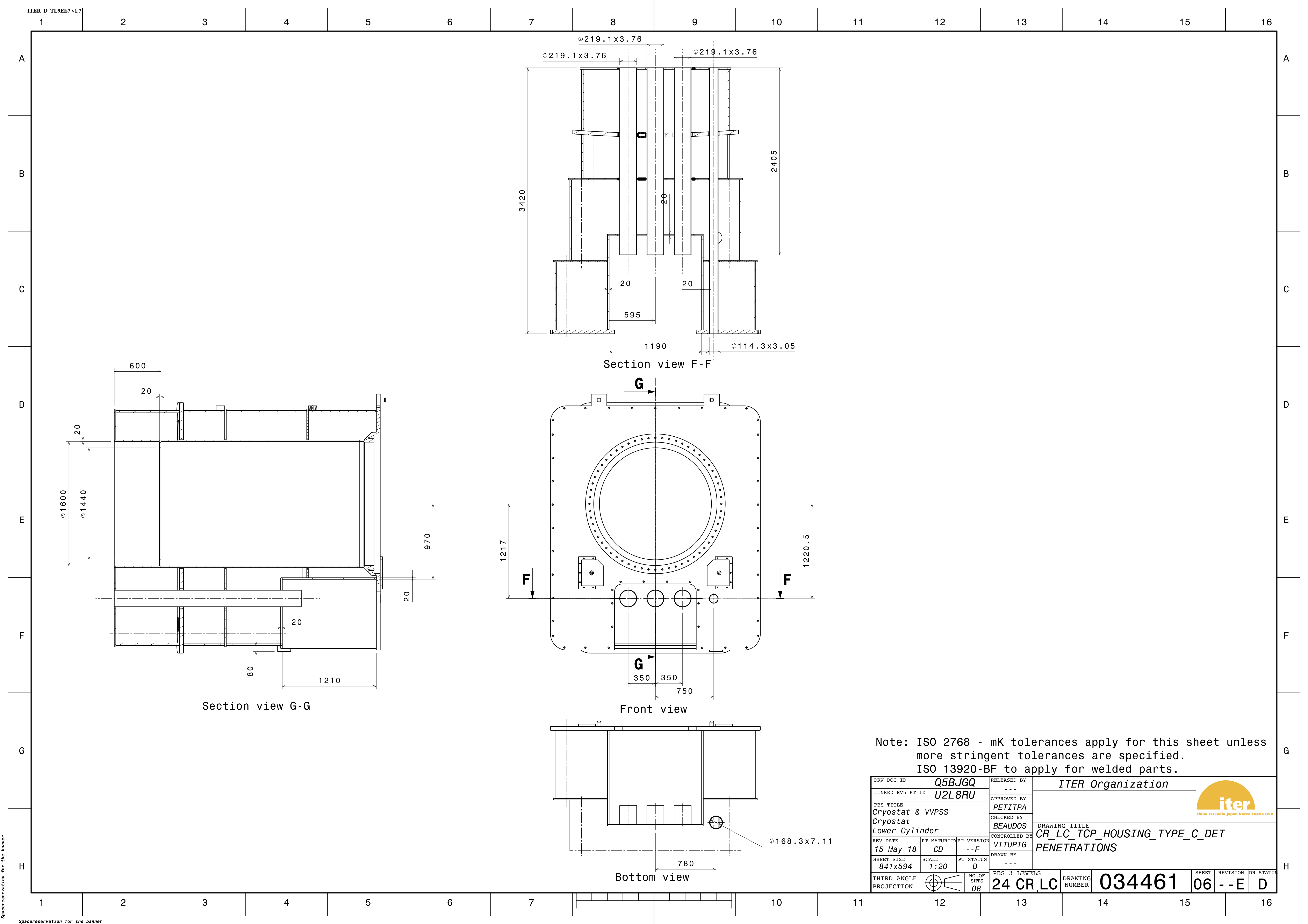
H



DRW DOC ID			Q5BJGQ			RELEASED BY			---			ITER Organization			 <small>china eu india japan korea russia USA</small>											
LINKED EV5 PT ID			U2L8RU			APPROVED BY			---																	
PBS TITLE Cryostat & VVPSS Cryostat Lower Cylinder						CHECKED BY			BEAUDOS			DRAWING TITLE CR_LC_TCP_HOUSING_TYPE_C_DET CRYOSTAT WALL FLANGE														
REV DATE 15 May 18						PT MATURITY		CD		PT VERSION								--F								
SHEET SIZE			841x594			SCALE			1:1			PT STATUS			D											
THIRD ANGLE PROJECTION									NO. OF SHTS 08			PBS 3 LEVELS 24 CR_LC			DRAWING NUMBER 034461			SHEET 04			REVISION --E			DR STATUS D		



DRW DOC ID			Q5BJGQ			RELEASED BY			ITER Organization			 china EU india japan korea russia USA								
LINKED EV5 PT ID			U2L8RU			---														
PBS TITLE			Cryostat & VVPSS			APPROVED BY			PETITPA											
Cryostat						CHECKED BY			BEAUDOS											
Lower Cylinder						CONTROLLED BY			VITUPIG			DRAWING TITLE CR_LC_TCP_HOUSING_TYPE_C_DET CRYOSTAT WALL FLANGE								
REV DATE		PT MATURITY		PT VERSION		DRAWN BY		---												
15 May 18		CD		--F																
SHEET SIZE		SCALE		PT STATUS																
841x594		1:10		D																
THIRD ANGLE																				
PROJECTION				NO.OF SHTS		PBS 3 LEVELS		DRAWING NUMBER		034461					SHEET		REVISION		DR STATUS	
				08		24 CR_LC									05		--E		D	



A

B

C

D

E

F

G

H

A

B

C

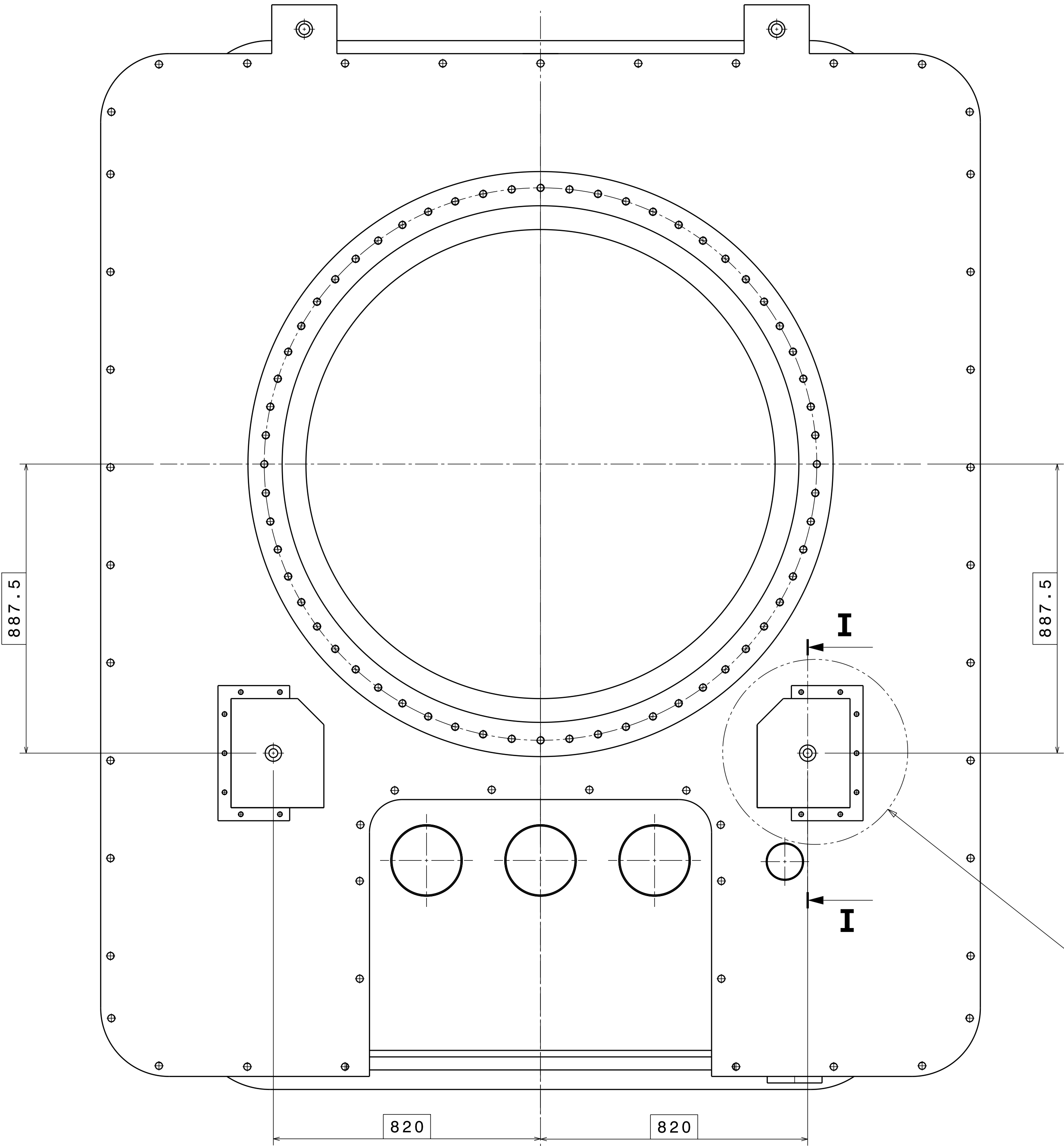
D

E

F

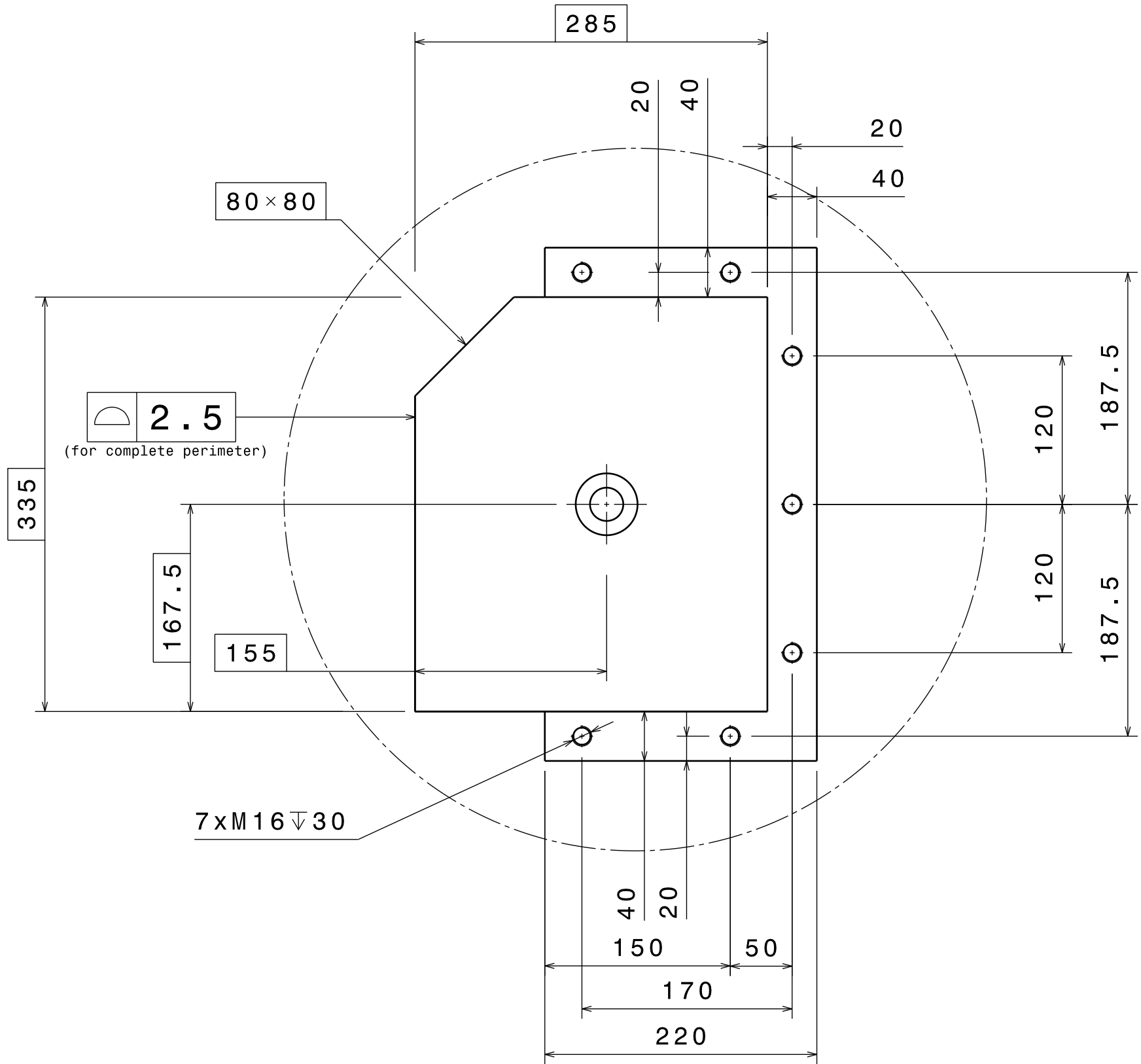
G

H

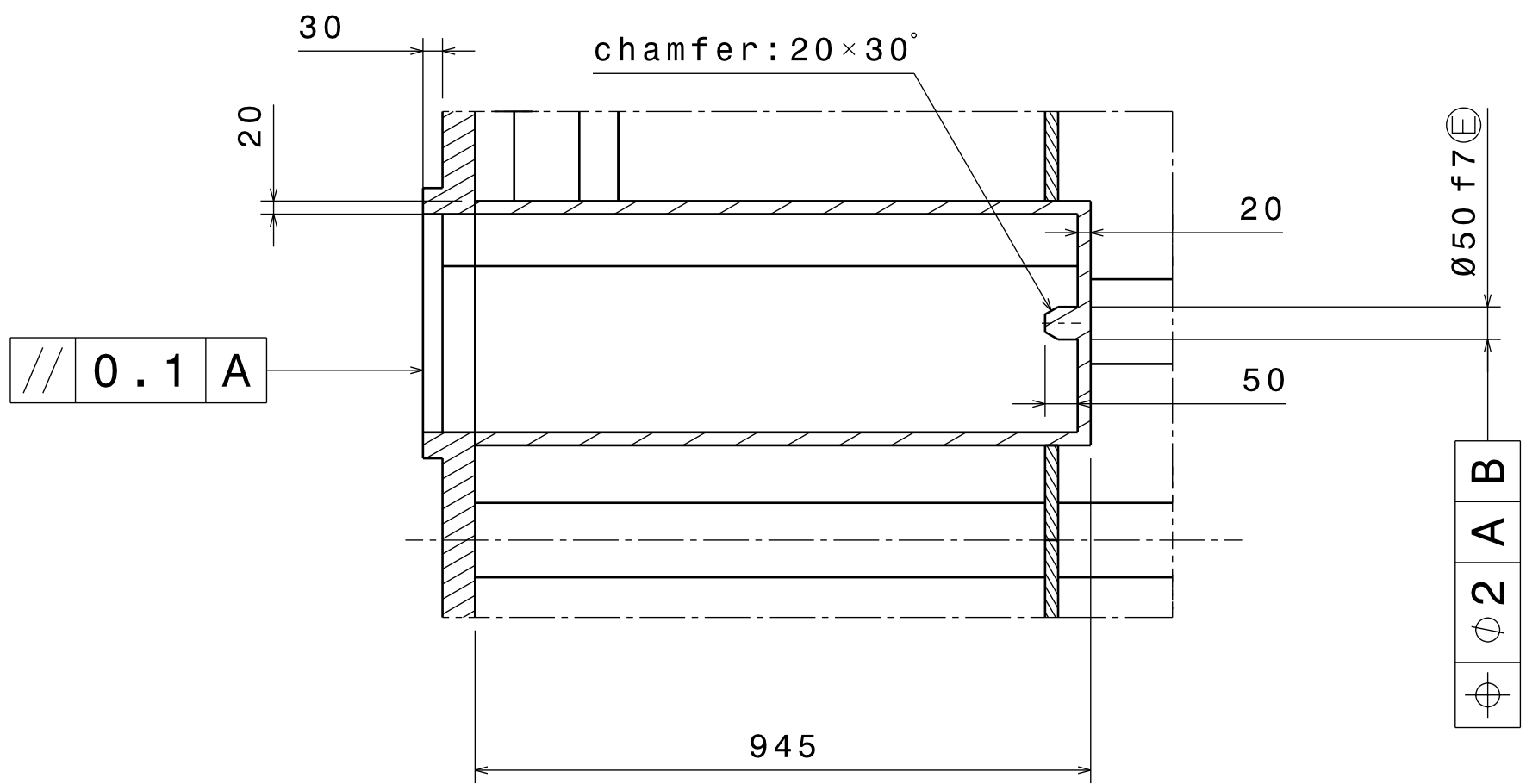


Front view

SEE DETAIL H


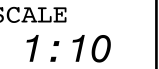


Typical for this socket and its symmetrical
Detail H
Scale: 1:4



Typical for this socket and its symmetrical
Section view I-I

Note: ISO 2768 - mK tolerances apply for this sheet unless more stringent tolerances are specified.
ISO 13920-BF to apply for welded parts.

DRW DOC ID			Q5BJGQ			RELEASED BY			ITER Organization			 china EU india japan korea russia USA					
LINKED EV5 PT ID			U2L8RU			---			APPROVED BY PETITPA								
PBS TITLE Cryostat & VVPSS Cryostat Lower Cylinder						CHECKED BY BEAUDOS											
						CONTROLLED BY VITUPIG											
REV DATE		PT MATURITY		PT VERSION		DRAWING TITLE											
15 May 18		CD		--F		CR_LC_TCP_HOUSING_TYPE_C_DET RH SOCKETS											
SHEET SIZE		SCALE		PT STATUS		DRAWN BY		---									
841x594		1:10		D													
THIRD ANGLE PROJECTION						NO. OF SHTS		PBS 3 LEVELS		DRAWING NUMBER		SHEET		REVISION		DR STATUS	
						08		24 CR LC		034461		07		--E		D	

A

B

C

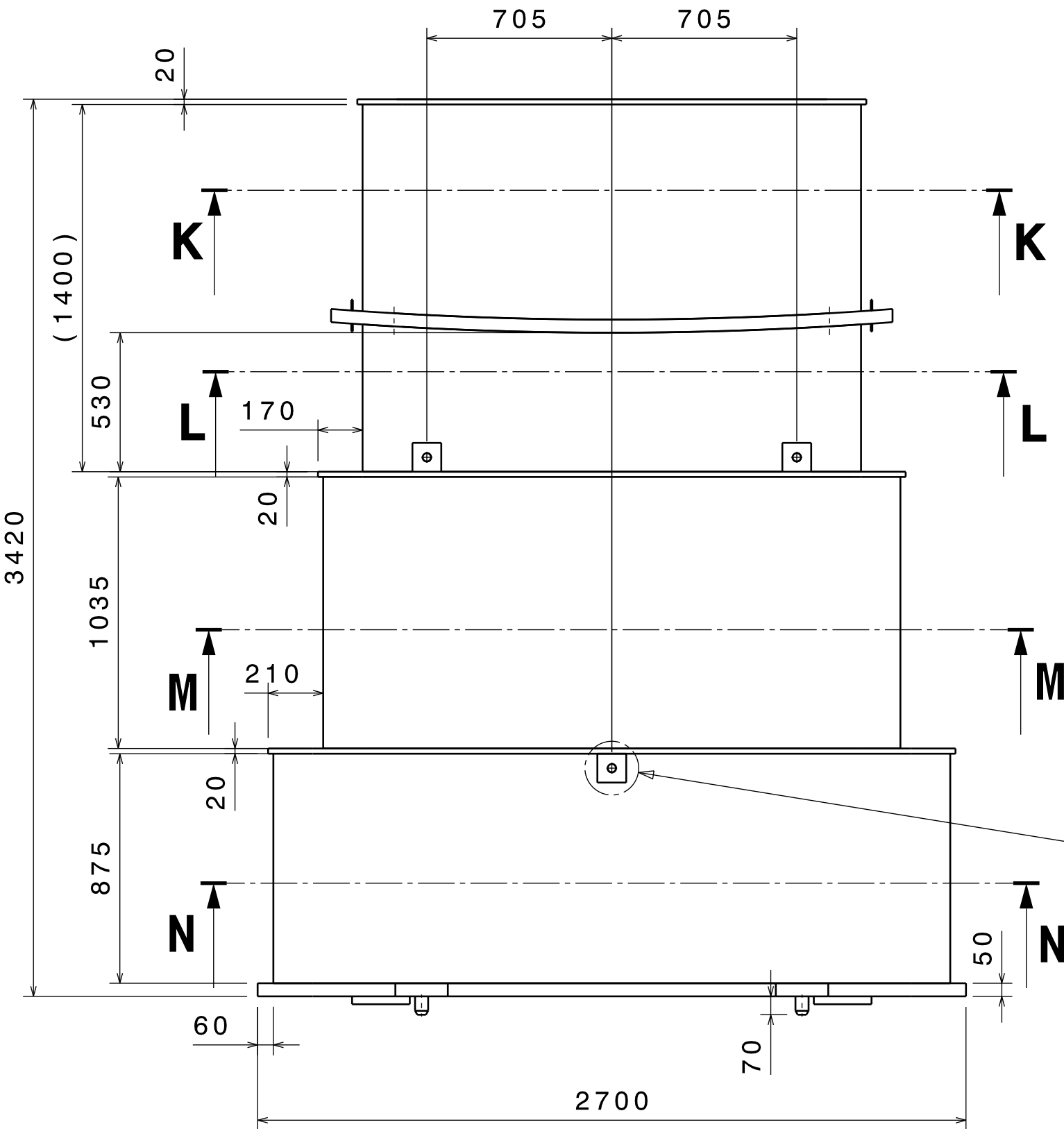
D

E

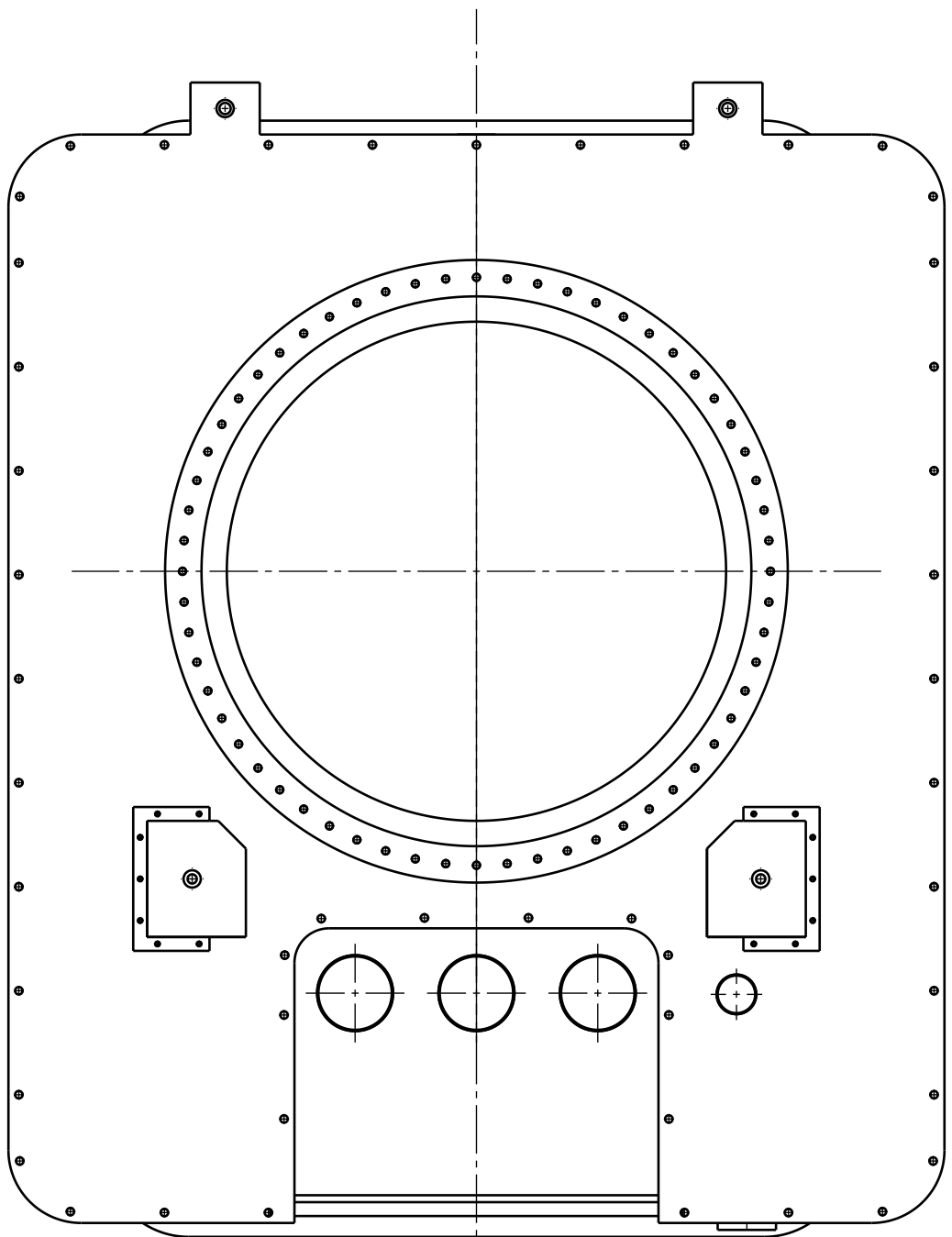
F

G

H

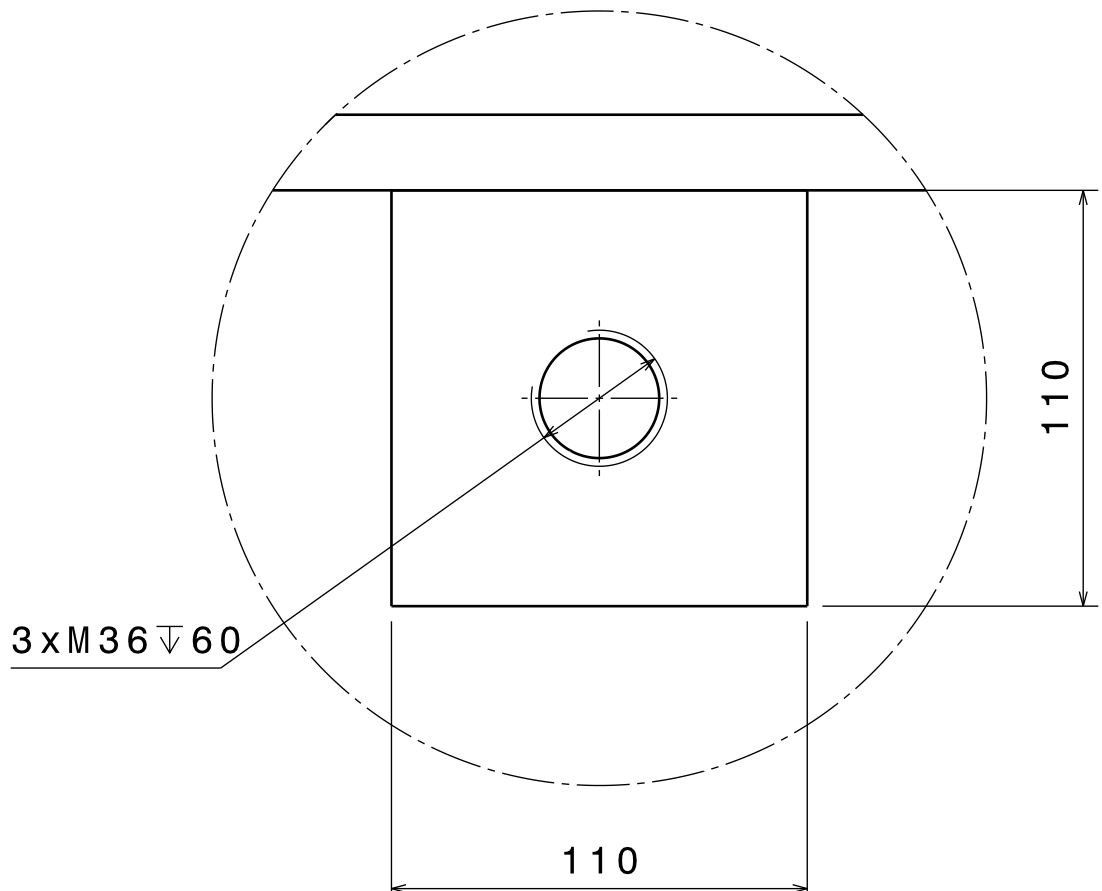


Top view



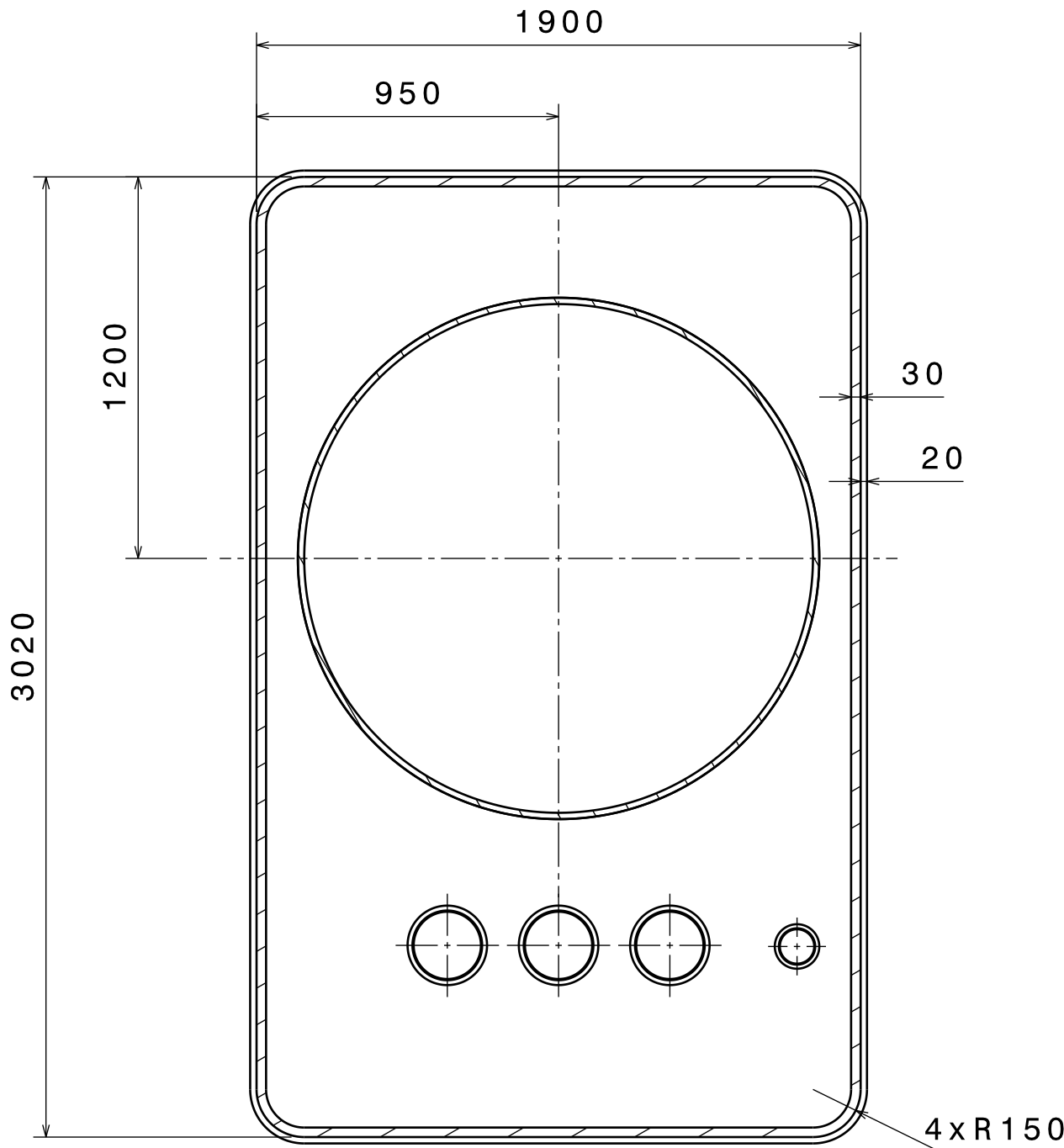
Front view

SEE DETAIL J

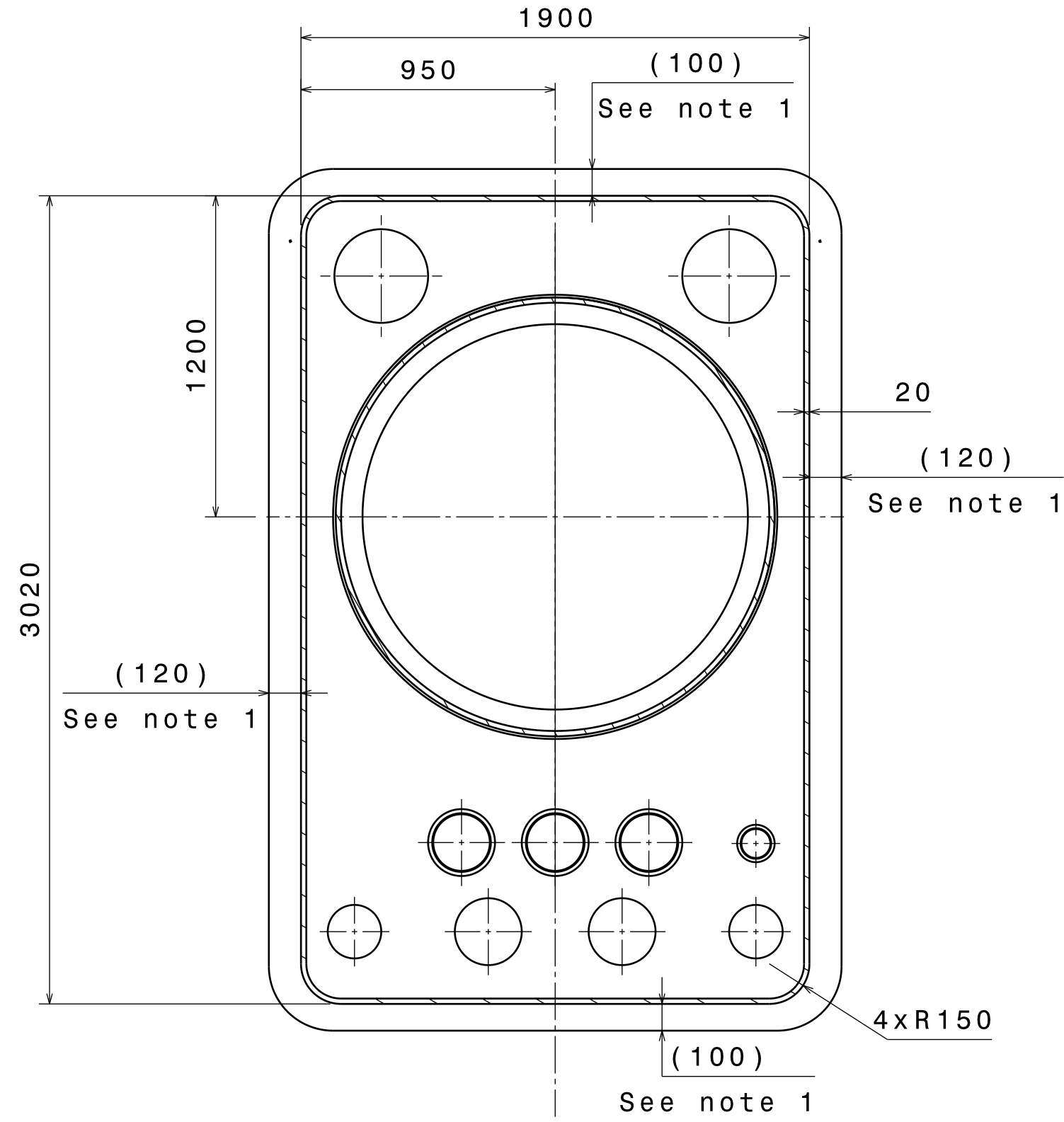


Typical for the 2
Lifting Lugs
(see note 3)

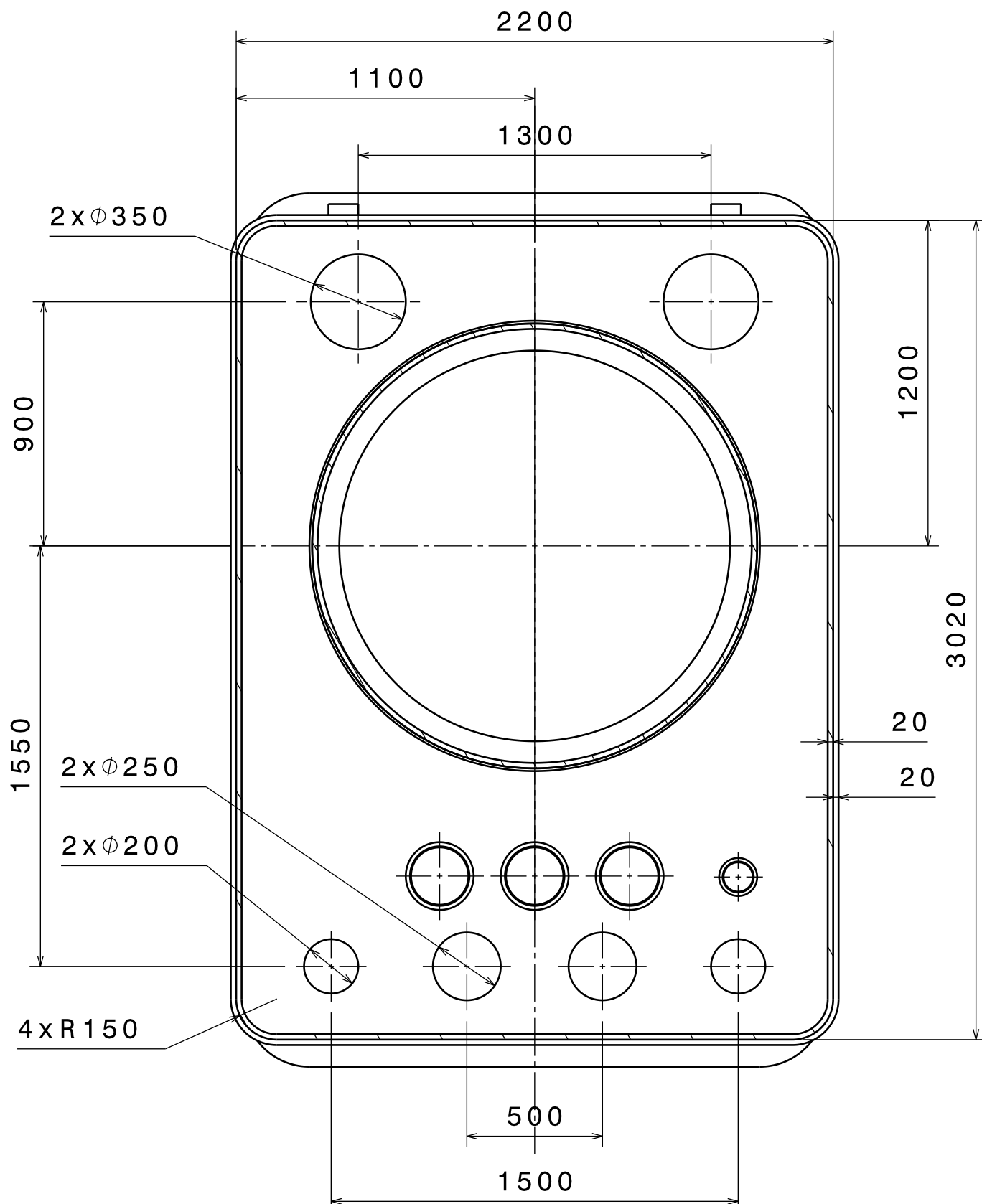
Detail J
Scale: 1:2



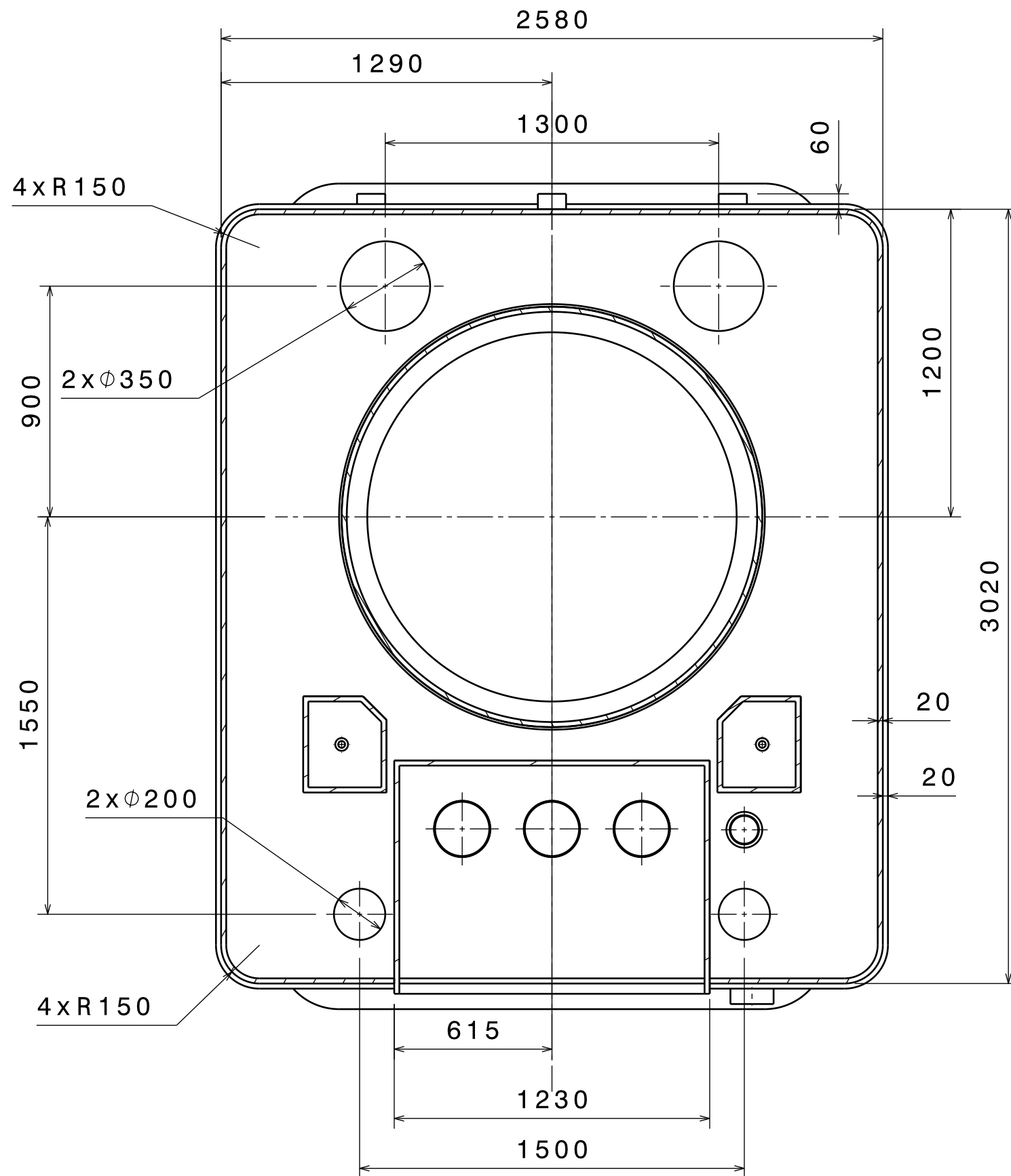
Section view K-K



Section view L-L


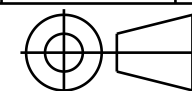


Section view M-M



Section view N-N

- Notes: 1. These values are nominal values. They can change according to the custom machining of the Cryostat Wall Flange (See sheet 5).
2. ISO 2768 - mK tolerances apply for this sheet unless more stringent tolerances are specified. ISO 13920-BF to apply for welded parts.
3. Design of lug shall be finalized at the time of handling based on handling analysis

DRW DOC ID			Q5BJGQ			RELEASED BY			ITER Organization			 china EU india japan korea russia USA														
LINKED EV5 PT ID			U2L8RU			APPROVED BY			<div></div>																	
PBS TITLE Cryostat & VVPSS Cryostat Lower Cylinder			PETITPA																							
			CHECKED BY BEAUDOS																							
REV DATE			PT MATURITY			PT VERSION			DRAWING TITLE																	
15 May 18			CD			--F			CR_LC_TCP_HOUSING_TYPE_C_DET																	
SHEET SIZE			SCALE			PT STATUS			MAIN STRUCTURE																	
841x594			1:20			D																				
THIRD ANGLE PROJECTION						NO. OF SHTS			PBS 3 LEVELS			DRAWING NUMBER			034461			SHEET			REVISION			DR STATUS		
						08			24 CR LC									08			--E			D		

A

B

C

D

E

F

G

H